

***Second Annual NMTA Observed Trials 2-Day Event  
At Edoras in Mora County, NM - June 6 & 7, 2026***

This document provides info to make your trip and preparations a little easier. Directions to the property are at the end. We suggest you print this document and bring it with you.

New for this year! In addition to the AMA waiver at the signup table, all guests/competitors and parents on behalf of their minor children *must read, understand, and sign the following warnings, general liability waiver, and trials-event-specific waiver document*. This will be *required to enter Edoras*. This can take up to 5 minutes per person, so **PLEASE** complete the process **at home, BEFORE the event** to avoid holding yourselves and others up at the gate!

Once you have filled out the waiver for yourself, simply submit and click on the button **'Anyone else need to sign?'** to submit another waiver for your party. Please note, If you arrive with a minor and are not their legal guardian, we will need a signature from their legal guardian before they can enter the property.

The link to fill out your waiver(s):

[CLICK HERE TO REVIEW AND SIGN](#)

**WiFi** is available in the lower area of Edoras. Look for:  
**ItHurtsWhenIP** and enter the password, **Redpill22!**

**CELL SIGNAL**

Two bars of 4G only in some places, but not all carriers are supported. There is no guarantee of adequate cell signal anywhere on Edoras.

**CAMPING/PARKING**

To make parking most efficient, we will verbally or personally direct you to a parking spot.

**PORTA POTTIES**

There are two, one in the lower area and the other in the upper are at the Chalet Edoras construction site just west of the trailer on the AM loop trail. These are NOT rental units. We ask that you kindly **not toss any paper down the hole, but rather put paper into the provided waste bin**.

## **WATER**

Bring your own drinking water. Non-potable utility water is available if you require more water.

## **GENERATORS**

Please limit generator use to daylight hours and be considerate of others.

## **CAMPFIRES/OUTDOOR FIRES**

Are prohibited. If conditions allow, the host will provide ONE place for a communal fire.

## **SPARK ARRESTORS**

Are required.

## **ADDITIONAL RULES & WARNINGS**

- Signed waivers are required to enter the property
- Non-trials bikes, ATVs, and UTVs by permission only (such as for mobility reasons)
- Don't ride off property or on the county roads (if you aren't sure, ask)
- Practice and explore away from parking/camping areas
- Never walk, hike, or ride alone, and let someone know where you intend to go
- Do not ride terrain that is beyond your skill level
- Inform event officials/NMTA officers of any injuries
- Out of respect for others, no free roaming of pets
- Ride loop trails in the direction indicated by the Trials Masters

## **MEDICAL SERVICES**

**No on-site medical services are provided during the event weekend.**

Outside medical services:

**Mora Valley Community Health Services**, 3 Mora Valley Clinic Rd., Mora, NM, (877) 271-2201 (M-F, 7AM to 5PM only). Good local reputation for non-severe medical needs.

GPS: **35.954962, -105.278246** (13 to 14-1/2 miles, depending on route taken)

**Holy Cross Medical Center**, 1397 Weimer Rd., Taos, NM, (575) 758-8883

GPS: **36.368354, -105.577877** (50 to 60 miles, depending on route taken)

**Christus St. Vincent Regional Medical Center**, 455 St. Michael's Dr., Santa Fe, NM, (505) 913-3361

GPS: **35.658786, -105.945937** (100 miles via a route through Las Vegas, NM)

**Alta Vista Regional Hospital**, 104 Legion Dr., Las Vegas, NM, (505) 426-3500

GPS: **35.622638, -105.210310** (33 miles going right out of the property gate)

### **Calling 911**

When calling a 911 dispatcher, cell phone triangulation is used to locate the caller. Given the weak cell coverage we strongly suggest asking the dispatcher to confirm they have the location right. You can also give them the entry gate GPS: **36.048131, -105.223135** Don't forget the, "comma space minus" in the middle of the address you provide. A further location clarification is, "Mora County, 2.3 miles north of Lucero on County Road A021 west side of the road."

**Mora County Sheriff: (575) 387-2222** resides in the Mora, NM courthouse at

GPS: **35.973984, -105.332507**

**New Mexico State Police, Las Vegas, NM: (505) 425-6771**

### **LOOP TRAILS:**

Both loop trails begin and end in the lower near the sign-in table.

The **AM loop trail** is new, ~2.2 miles long, and marked with large pale-yellow flags. Saturday the loop will run counterclockwise – flags on the right). Sunday the AM loop will run non-standard, as in clockwise with the flags always on the left. *Ride this loop trail 'backwards' ONLY during the hours of the Sunday Am event!*

The **PM loop trail** is also new, about 2-1/2 miles long, and marked with large blue flags. The PM loop will always run standard forward, counterclockwise, with flags on the right. The PM loop trail will T-off in different directions for the Saturday and Sunday events, then merge back onto the common loop trail after a couple of sections. Watch for signage.

***Rider's meetings are typically 08:45 and 12:45 but may vary slightly by whim, as indicated by when the horn blows.***

**Saturday's TMs:**

**AM:** Sam Lambie, 8 sections. **PM:** Chris Johnson, 9 sections.

Saturday afternoon/evening, Kyle Goon's fantastic band will play for us. Band setup location TBD (weather dependent).

**Sunday's TMs:**

**AM:** Tom Mastor, 8 sections. **PM:** Bruce Bolander, 9 sections.

*Note: The PM events are being co-set by Bruce and Chris.*

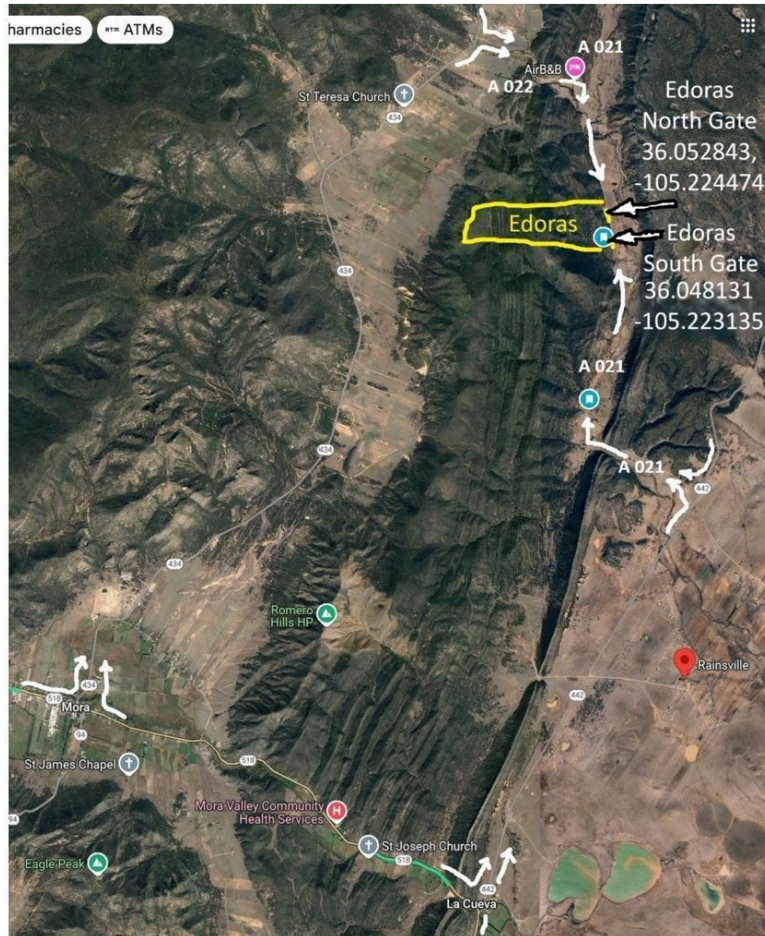
**LOCATION/DIRECTIONS**

Edoras South gate GPS: **36.048131, -105.223135**

Google Maps: **395 County Road A021 Mora, NM 87732**

Pins to just inside the gate. If *Directions* mode fails from loss of cell signal, back out to just the map and watch your blue-dot location to navigate relative to the destination. (You can also use that method to navigate on property after leaving WiFi).

**Edoras Property Satellite Overview Map (horizontal scale is 8 miles):**



Edoras can be approached from either the north or south on County Road A021. There is ample turning radius into the gate from both directions, but really large/long rigs can approach from the north for a larger turn-in radius. If you are waiting in line please pull to the side to not block local traffic.



The route coming from the south is in the left of the photo. That route was recently graded and widened and is much improved. Another view of the two approach routes to Edoras:



### **Wordy Directions:**

To approach Edoras gate **from the south**, on NM518, go north at Cueva on NM442 for 5.1 miles, then go left (west) onto gravel county road A021 (aka Lucero Road). Go 1.5 miles west to Lucero, which is like driving through an old ranch yard. A021 will turn hard right in Lucero (north), where 2.3 miles will remain to arrive at Edoras South gate, which will be on your left.

To approach Edoras gate **from the north**, go Mora on NM 518. Go north on NM 434 for 9.7 miles to county road A022 immediately around a curve left and hidden by trees (comes up fast!). Go right (east) on A022. *[If you blow past this right turn with a large rig, you can continue north another 1.9 miles to take the next gravel road that goes east 1.4 miles to a T with A022, going right (south) on A022 for 3.8 miles to arrive at Edoras South gate, which will be on your right.]* Back on the shorter route going east on A022, go 1.3 miles to a T intersection with A021. Go right (south) for 1.9 miles to the Edoras South gate, which will be on your right.

When you arrive, we will check that everyone has completed the liability waiver process, then you will be directed to a parking space by rig size and states privacy preference. Parking is in the front sloped grassy meadow and along two gravel roads strung out over about 1/3<sup>rd</sup> mile. The 'lower area' is up front. An extension of the lower are is accessed by going right at the T. Parking in that area is not for long/huge rigs as the turnaround is not large.

The 'upper area' is accessed by going left at the T and about ¼-mile up and along the ridge on the gravel road having parking on the left and right, then continuing up to the Chalet Edoras construction site. Continuing through and past Chalet Edoras there is a large-vehicle turnaround (don't park in the turnaround). Beyond the turnaround are entrances to the parking area known as Snob Hill & Archery Park, which is the highest-farthest parking area.